

NORLINGE

Équipement textile professionnel

Informations techniques :

Black out / occultant

- Composition : 100% polyester FR
- Largeur : 290 cm
- Format : roulé sur grande laize
- Poids : 410 gr/m²
- Longueur du rouleau : 30 cm

Classement au feu M1

Lavage machine 40°, chlorage interdit, séchage machine interdit, repassage autorisé, nettoyage à sec possible

DISCOVERY



Coloris :



chalk



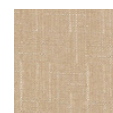
ivory



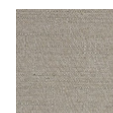
ecru



cloud



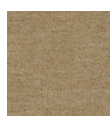
biscuit



fog



nougat



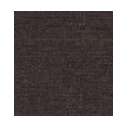
hessian



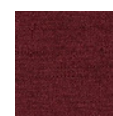
gravel



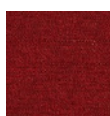
peppercorn



cocoa



damson



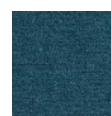
rouge



indigo



denim



teal



mineral



green tea



citrine



raven



storm



ash



zinc